

## **NEW DUST RIGHT BENCH SWEEP PROVIDES CONVENIENT BENCHTOP CLEANUP**

MEDINA, MN. (Aug. 30, 2016) — Rockler Woodworking and Hardware has introduced the Dust Right Bench Sweep, a funnel-shaped receptacle that catches dust, dirt and debris swept off the end of a workbench or table.

The Bench Sweep can be used passively, allowing gravity to pull dust and debris down into a bin, or actively, connected via 2-1/2" hose to a powered dust collection system. The hinged lid acts as a backstop in the "passive" setup and can be closed to function as a blast gate in the "active" setup. An optional plastic grid can be left in to filter out large chunks of debris and scrap as well as stray hardware or fasteners.

"Sweeping a benchtop clean should be simple, and now it is," said Steve Krohmer, Rockler's vice president of merchandising and proprietary. "The Bench Sweep allows folks to clear their work surface quickly, and the screen helps save fasteners and hardware from being discarded and prevents large debris from clogging dust collection equipment."

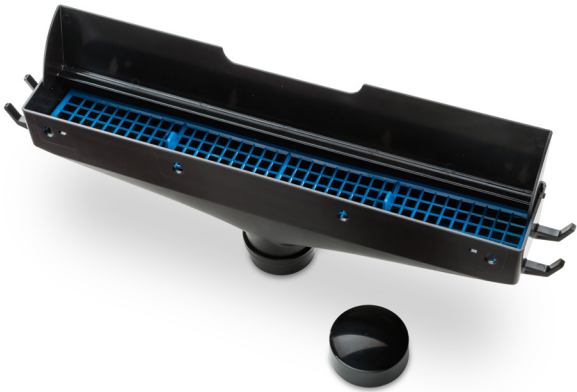
Each Bench Sweep features keyhole slots for easy mounting and switching from table to table. Additional hooks on both ends allow easy storage and retrieval of brushes and other essential tools.

The Dust Right Bench Sweep (50608) is priced at \$29.99. It is part of the complete Dust Right line and can be purchased at [Rockler.com](http://Rockler.com) or at Rockler Woodworking and Hardware stores nationwide, as well as through the Rockler catalog. For store locations or a free catalog, visit [www.rockler.com](http://www.rockler.com) or call 1-877-ROCKLER.

### **ABOUT ROCKLER WOODWORKING AND HARDWARE**

Celebrating its 62nd year as a family-run business, Rockler Woodworking and Hardware is the nation's premier supplier of specialty hardware, tools, lumber and other high-quality woodworking and do-it-yourself products. Rockler has 34 retail locations in AZ, CA, CO, FL, GA, IL, IN, MA, ME, MI, MN, MO, NH, NY, OH, OR, PA, TX, WA, and WI, as well as extensive catalog and internet operations.

To learn more about Rockler, please visit [www.rockler.com](http://www.rockler.com) or call 1-877-ROCKLER.



"Passive" setup



"Active" setup